

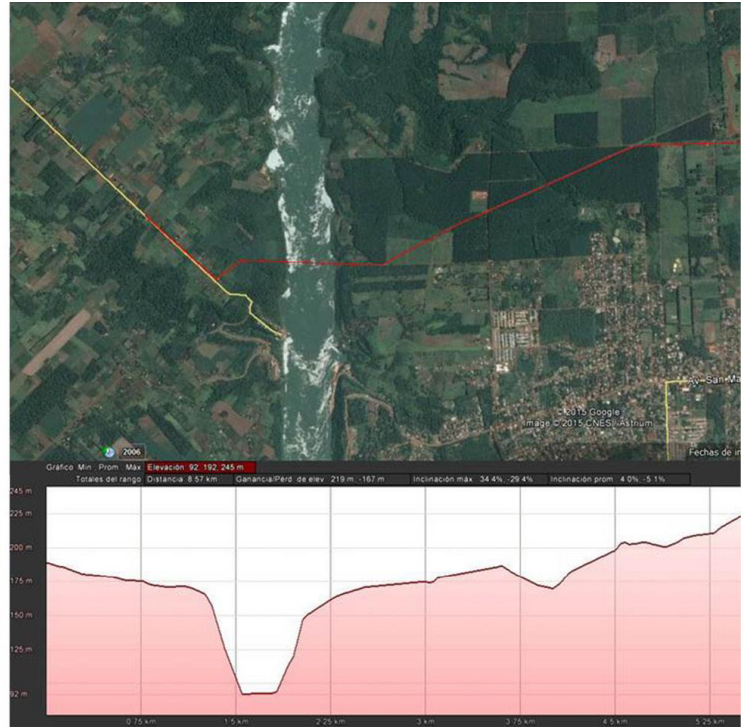
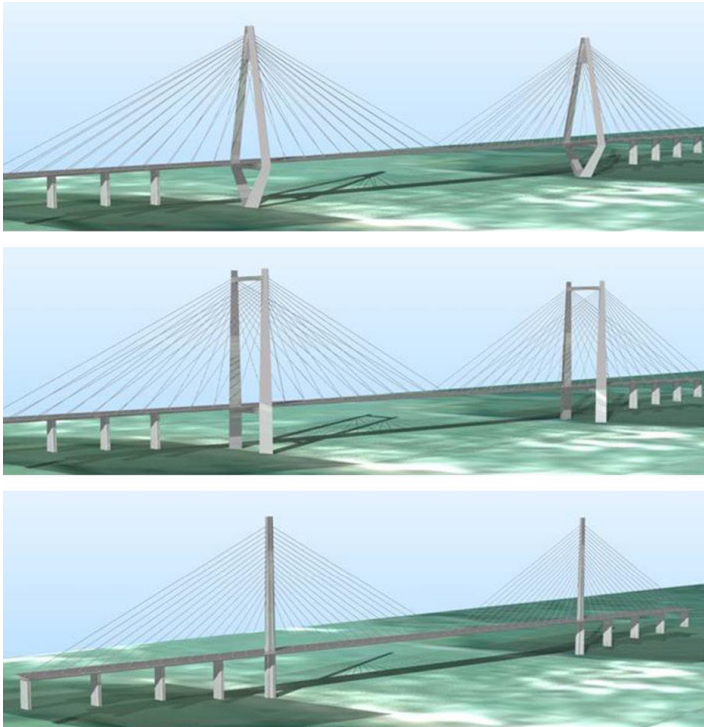


Bridge over the Paraná River

Eldorado (Argentina) - Mayor Otaño (Paraguay) / 2016

Structural type
Characteristics
Client
Scope

cable Stayed Bridge
maximum span: 560m
BID - Banco Interamericano de Desarrollo
preliminary design



Feasibility study between Eldorado (Argentina) - Mayor Otaño (Paraguay)



C/ Barquillo 23, 2º | 28004 Madrid | España
T. (+34) 917 014 460 | F. (+34) 915 327 864
www.fhecor.com | fhecor@fhecor.es